



# Heavy Duty Triangle Plates

## AQUALLINE HEAVY DUTY TRIANGLE PLATE. MM DIMENSIONS

Model Number	SWL (Mtons)	MBL (Mtons)	Dimensions (mm)				Weight (kg)
			Ø A	B	C	R	
HDTP 9.5	9.5	50	35	40	110	45	5
HDTP 12	12	70	38	42	120	48	6.5
HDTP 13.5	13.5	80	41	48	130	50	8
HDTP 17	17	100	46	52	140	55	10.5
HDTP 25	25	125	54	60	155	65	16.5
HDTP 35	35	175	62	70	175	75	25
HDTP 55	55	275	76	90	210	90	46
HDTP 85	85	425	88	100	240	105	69
HDTP 120	120	600	100	118	280	120	107
HDTP 150	150	750	115	142	310	135	163
HDTP 200	200	1000	140	150	380	170	260
HDTP 250	250	1250	150	160	425	180	345
HDTP 300	300	1500	160	178	450	193	435
HDTP 400	400	2000	186	205	480	215	680
HDTP 500	500	2500	200	225	510	240	860

## AQUALLINE HEAVY DUTY TRIANGLE PLATE. INCH DIMENSIONS

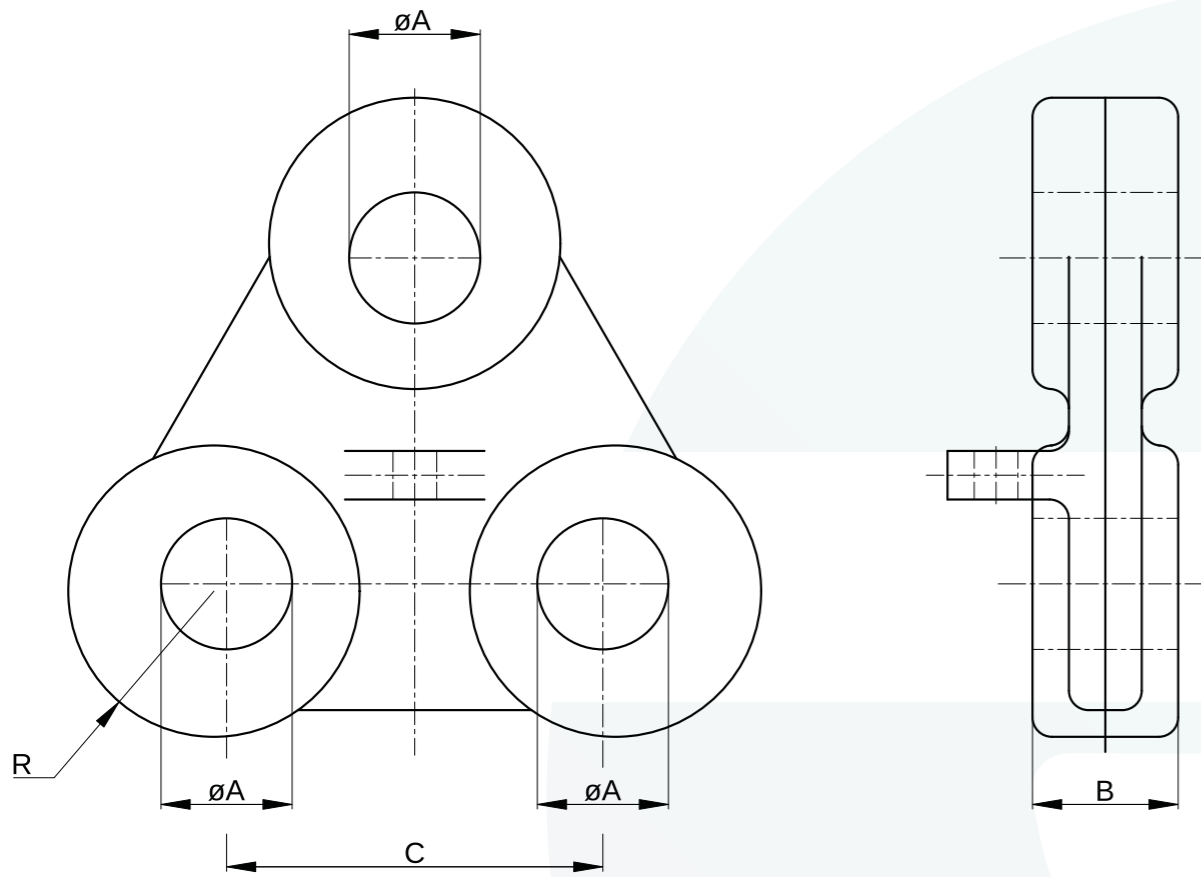
Model Number	SWL (Mtons)	MBL (Mtons)	Dimensions (inch)				Weight (lbs)
			Ø A	B	C	R	
HDTP 9.5	9.5	50	1.38	1.57	4.3	1.77	11
HDTP 12	12	70	1.5	1.65	4.7	1.9	14
HDTP 13.5	13.5	80	1.6	1.9	5.1	1.97	17
HDTP 17	17	100	1.8	2	5.5	2.2	22
HDTP 25	25	125	2.1	2.4	6.1	2.6	36
HDTP 35	35	175	2.4	2.8	6.9	3	55
HDTP 55	55	275	3	3.5	8.3	3.5	102
HDTP 85	85	425	3.5	3.9	9.5	4.1	152
HDTP 120	120	600	3.9	4.7	11	4.7	235
HDTP 150	150	750	4.5	5.6	12.2	5.3	360
HDTP 200	200	1000	5.5	5.9	15	6.7	570
HDTP 250	250	1250	5.9	6.3	16.7	7.1	760
HDTP 300	300	1500	6.3	7	17.7	7.6	950
HDTP 400	400	2000	7.3	8.1	18.9	8.5	1500
HDTP 500	500	2500	7.9	8.9	20	9.5	1900

SWL = Safe Working Load

MBL = Minimum Breaking Load

All heavy duty triangle plates are supplied with hot dipped galvanized finish. HDTP 25 – HDTP 500 are also available in aqua-blue primer (RAL 5018).

For more information read our 'Warnings and instructions for use'.



Available from size HDTP 9.5 to HDTP 500. From HDTP 25 and above, all triangle plates have a lifting eye and shackle for safe and easy handling during assembly. Suitable for commercial bow shackles that are designed according to EN 13889 or Fed. Spec. RR-C.271.